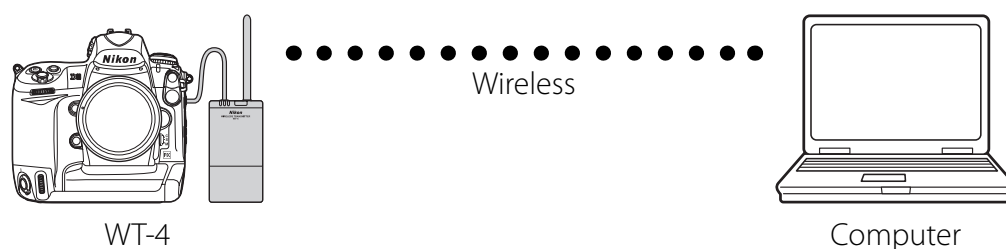


En **Configuring the WT-4 for Upload to a Computer (Ad-hoc Mode)**

This document provides basic instructions on configuring the WT-4 wireless transmitter and a Windows XP Professional SP2 computer for transmission over an ad-hoc (peer-to-peer) network consisting solely of the computer and WT-4.



Introduction

This section describes a simple wireless network consisting solely of the WT-4 and an computer, with no connections to other networks or devices. Follow the steps below to use the WT-4 in this type of network.

- 1: Get Ready..... pg. 2**
- 2: Assign the Computer an IP Address pg. 3**
- 3: Configure the Network pg. 5**
- 4: Copy the Network Profile to the Camera..... pg. 8**
- 5: Connect to the Computer..... pg. 13**

1: Get Ready

Equipment

Ready the following:

- A WT-4 wireless transmitter
- A fully-charged EN-EL3e battery for the WT-4
- A Nikon D3 or D300 digital SLR camera
- A fully-charged battery for the camera (an EN-EL4a for the D3, a EN-EL3e for the D300)
- A computer with Windows XP Professional SP2, the WT-4 Setup Utility installed
- A memory card
- A USB cable
- Manuals for the above equipment

Network Settings

Note the IP addresses, encryption, and other settings that will be used in the wireless LAN. The following are intended as examples only.

- IP address for the WT-4: 192.168.1.4
- IP address for the computer 192.168.1.3
- Subnet mask: 255.255.255.0
- Network name (SSID): WT-4
- Communication mode: Ad hoc
- Channel: 1
- Authentication: open system
- Authentication: WEP64
- Encryption key: abc12
- Key Index: 1

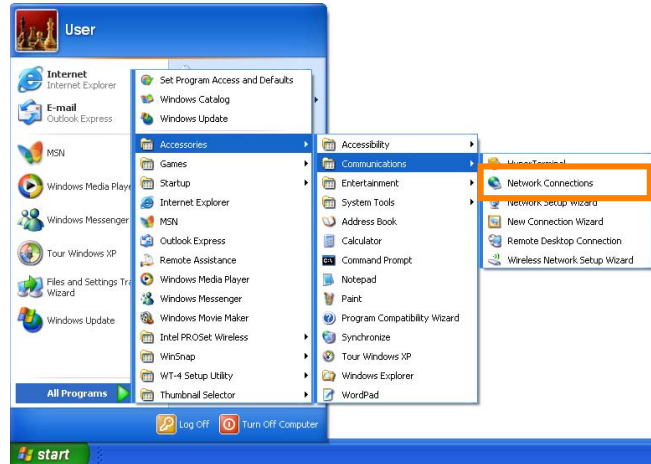
2: Assign the Computer an IP Address

Choose an address for the computer. The following IP address is intended as an example only.

- **IP address:** 192.168.1.3
- **Subnet mask:** 255.255.255.0

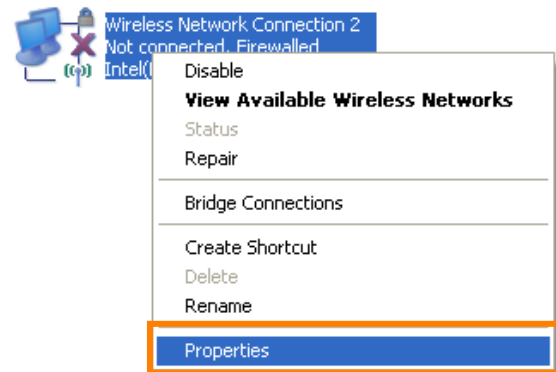
2 - 1

Click **Start** and select **All Programs > Accessories > Communications > Network Connections**.



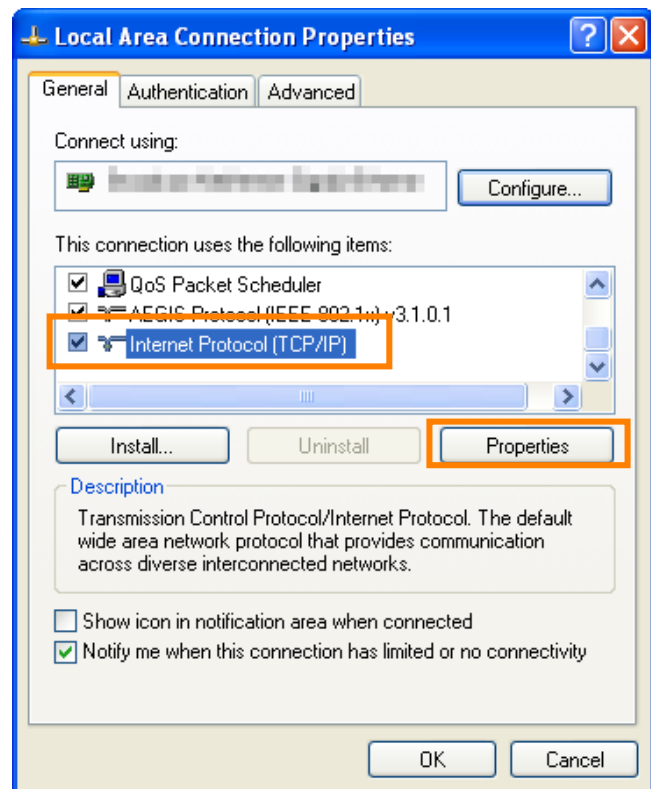
2 - 2

Right-click the **Wireless Network Connection** icon and select **Properties** from the menu that appears.



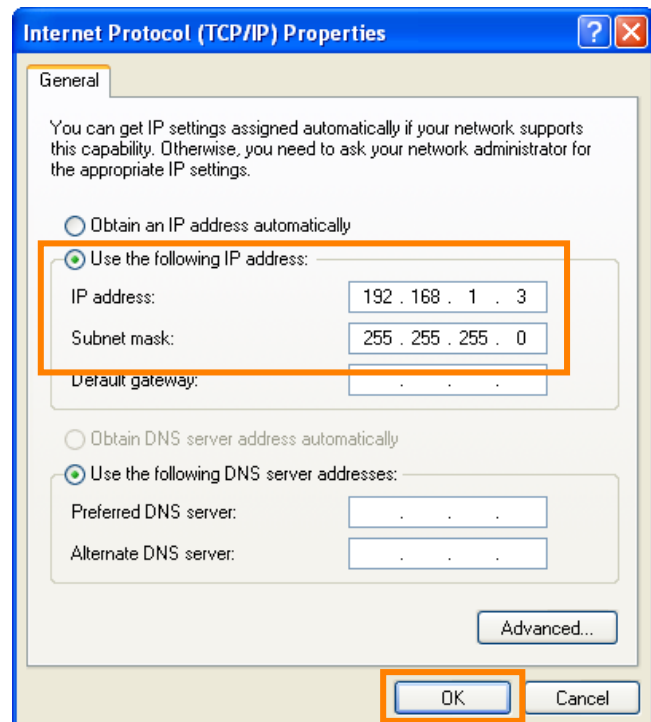
2-3

Select **Internet Protocol (TCP/IP)** and click **Properties**.



2-4

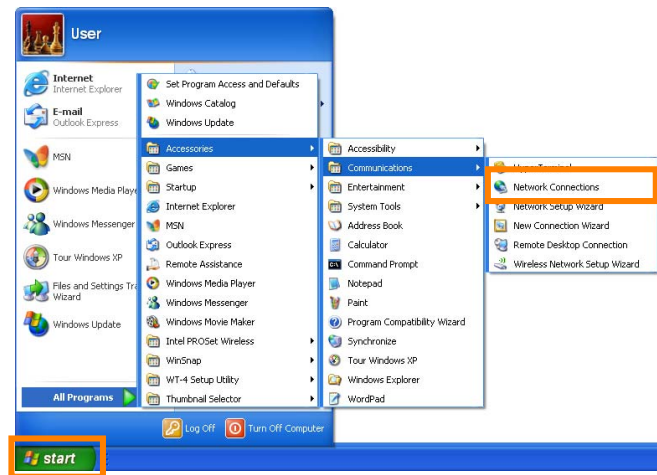
Select **Use the following IP address** and enter the IP address and subnet mask for the computer. Click **OK** to exit and then click **OK** to close the properties dialog. This completes the process of assigning an IP address to the computer.



3: Configure the Network

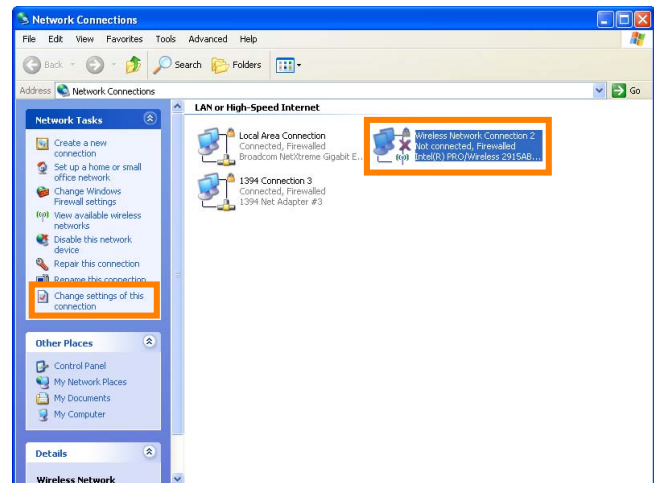
3-1

Click **Start** and select **All Programs > Accessories > Communications > Network Connections**.



3-2

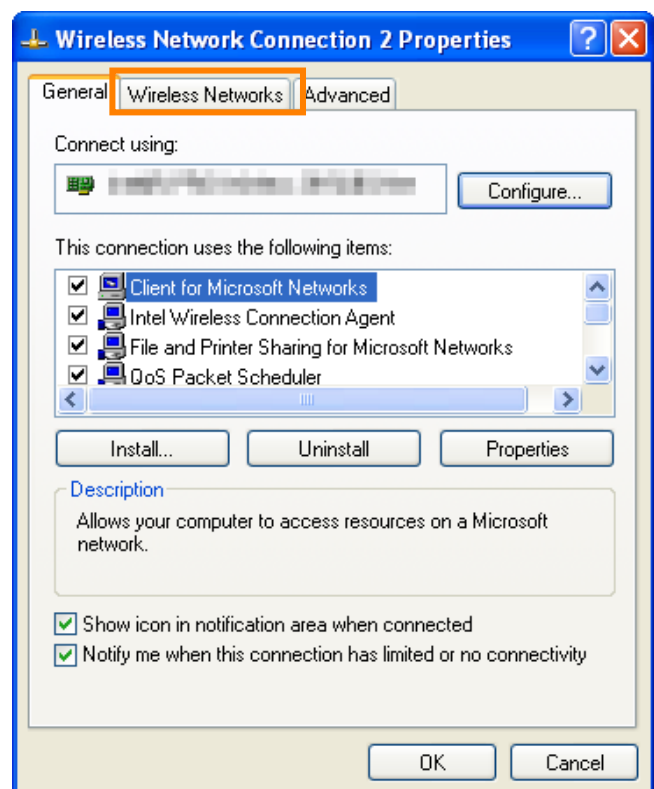
Select **Wireless Network Connection** and click **Change settings of this connection**.



3-3

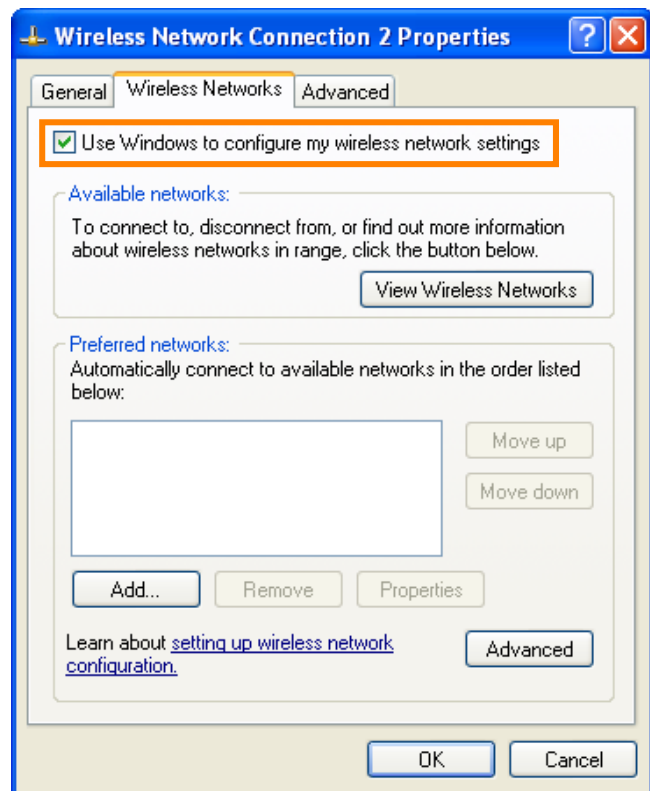
Click the **Wireless Networks** tab.

If a third-party wireless connection program is installed, the **Wireless Networks** tab will not be displayed. Choose authentication, encryption, and a security key as described in the documentation for the wireless LAN adapter. The Wireless Networks tab may also not be displayed if Wireless Network Connection is disabled, or if **Wireless Zero Configuration** is active in the **Performance and Maintenance > Administrative Tools > Services Control Panel**.



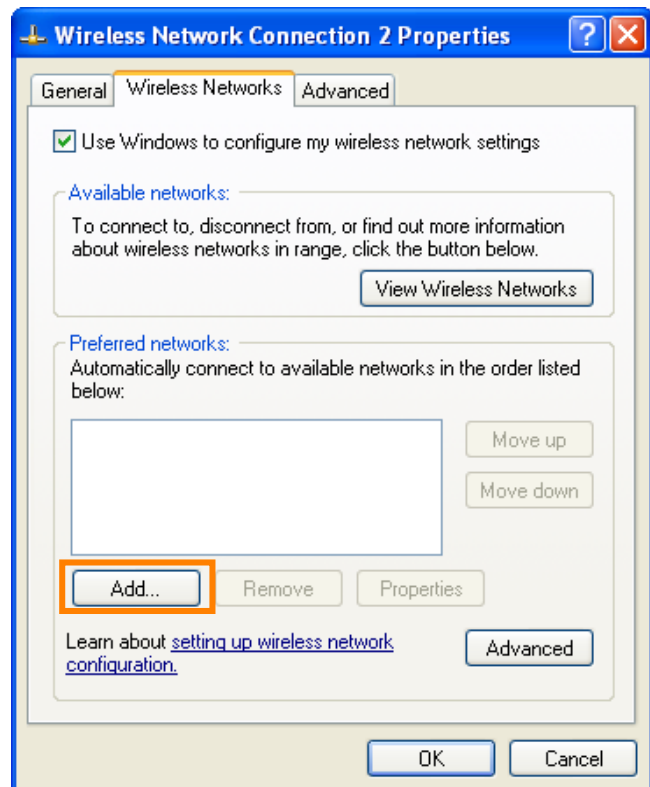
3-4

Select **Use Windows to configure my wireless network settings**.



3-5

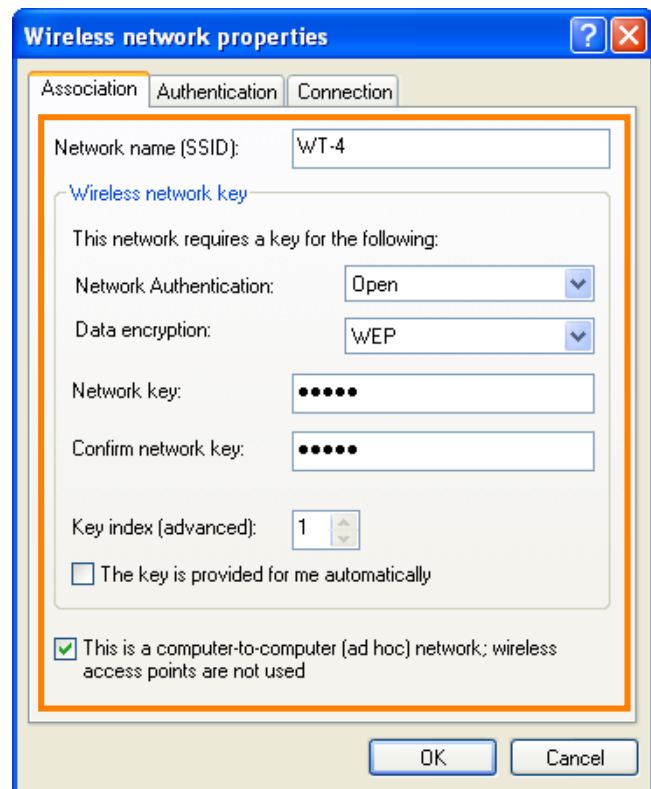
Click **Add**.



3-6

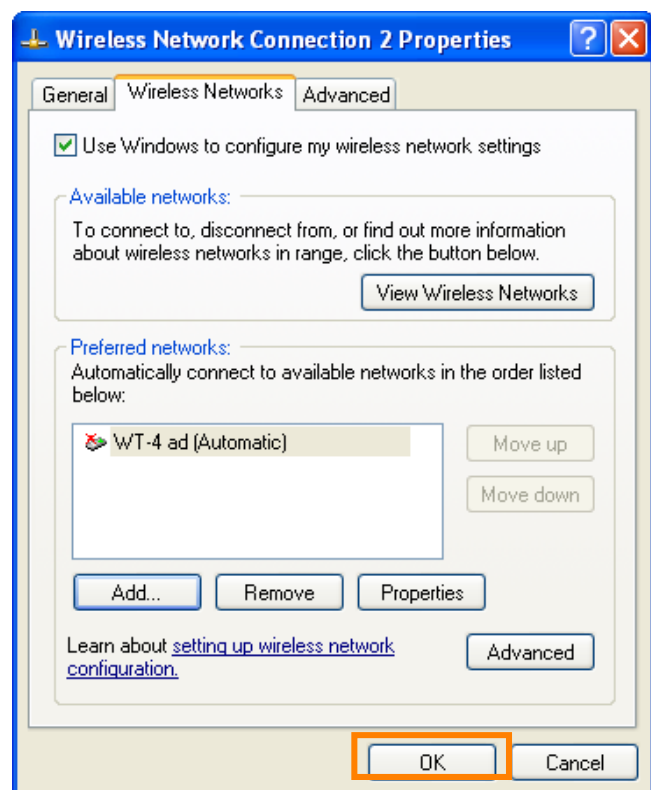
After entering a network name and choosing security options as described below, select **This is a computer-to-computer (ad hoc) network; wireless access points are not used** and click **OK**. Do not select **The key is provided for me automatically**.

- **Network name:** Enter a name of up to 32 characters. The network in this example uses the identifier **WT-4**.
- **Security type:** Choose from **Open, Shared**.
- **Data encryption:** Choose from **WEP** and **Disabled**.
- **Network key:** If **WEP** is selected for **Data encryption**, enter a security key. To enable 64-bit encryption, enter a five-character ASCII or ten-digit hexadecimal key. To enable 128-bit encryption, enter a 13-character ASCII or 26-digit hexadecimal key. ASCII keys may contain letters, punctuation, and the numbers 0–9, hexadecimal keys the numbers 0–9 and the letters a, b, c, d, e, and f.
- **Key index (advanced):** If **WEP** is selected for **Data encryption**, choose a key index.



3-7

Click **OK**. Network setup is now complete.

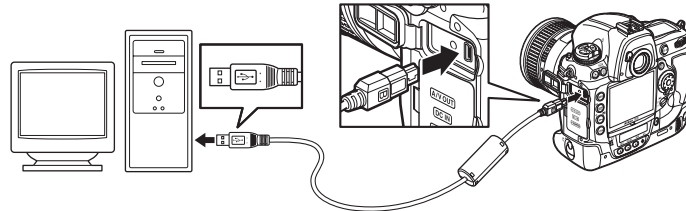


4: Copy the Network Profile to the Camera

Use the WT-4 setup utility to copy the network profile to the camera. Before proceeding, make sure that **MTP/PTP** is selected for the **USB** option in the camera setup menu.

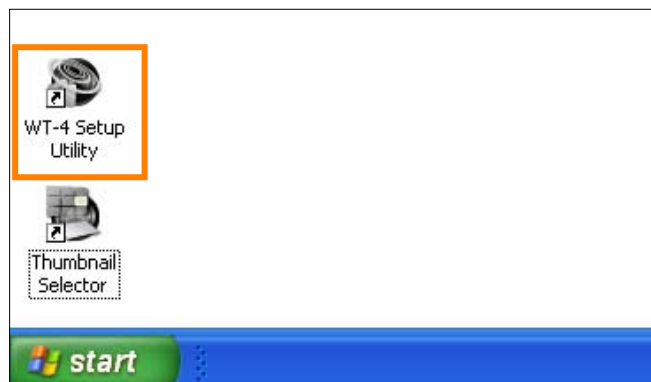
4 - 1

After starting the computer, use the supplied USB cable to connect the camera and turn the camera on.



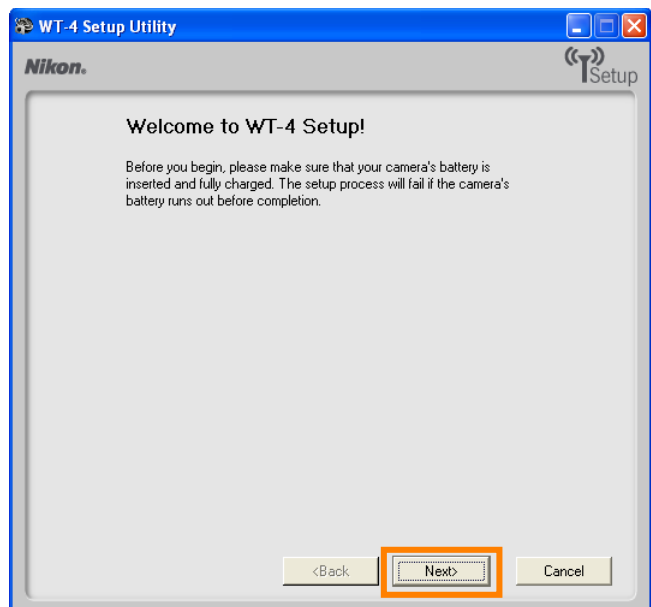
4 - 2

Double-click the **WT-4 Setup Utility** icon on the desktop.



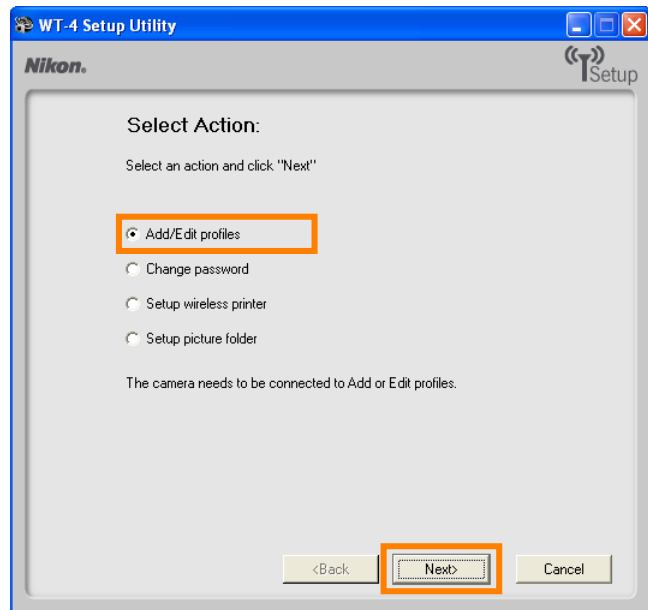
4 - 3

The dialog shown below will be displayed; click **Next**.



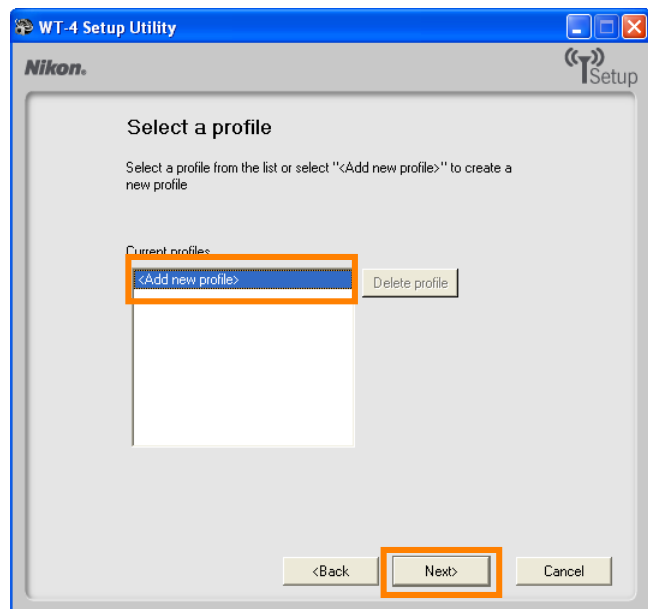
4 - 4

Select **Add/Edit profiles** and click **Next**.



4 - 5

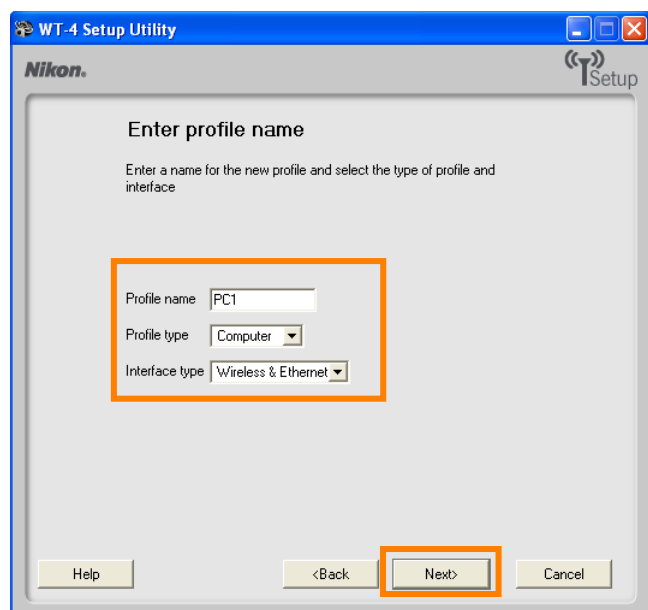
Select **Add new profile** and click **Next**.



4 - 6

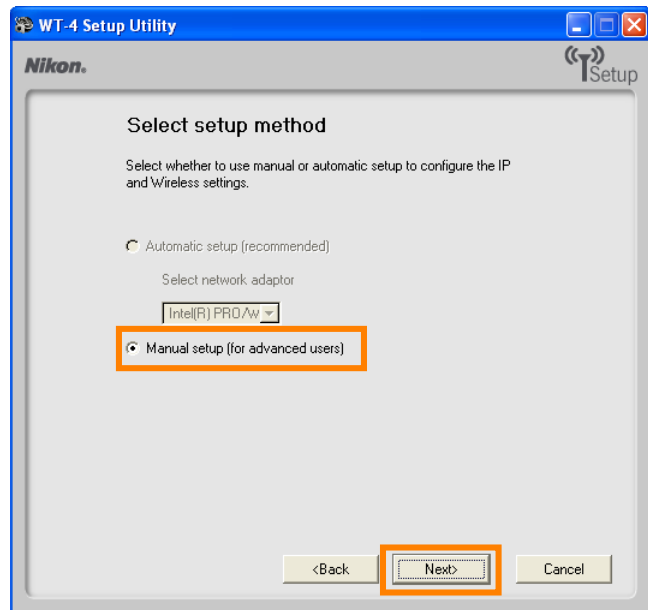
Enter the following information and click **Next**:

- **Profile name:** Enter a name of up to 16 characters (in this example, **PC1**).
- **Profile type:** Choose **Computer**.
- **Interface type:** Choose **Wireless & Ethernet** for networks that include wireless, or **Ethernet only** for Ethernet-only networks.



4-7

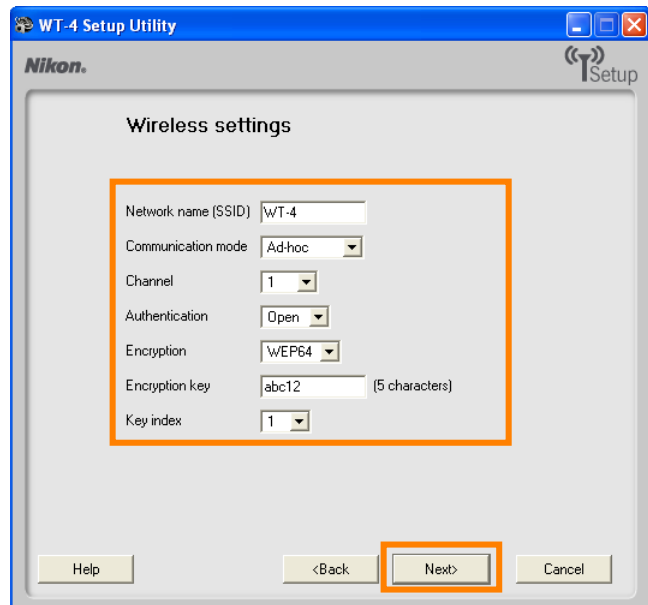
Select **Manual setup** and click **Next**.



4-8

Enter the following information and click **Next**.

- **Network name (SSID):** WT-4
- **Communication mode:** Ad hoc
- **Channel:** 1
- **Authentication:** None (open networks only)
- **Encryption:** WEP64
- **Encryption key:** abc12
- **Key Index:** 1



4 - 9

Enter the following information and click **Next**.

- **IP address:** 192.168.1.4
- **Subnet mask:** 255.255.255.0
- **Default gateway:** Remove the check from this option.
- **DNS Server:** Remove the check from this option.

WT-4 Setup Utility

Nikon

TCP/IP settings

Obtain IP address automatically

IP address: 192.168.1.4

Subnet mask: 255.255.255.0

Default gateway

DNS Server

<Back Next> Cancel

Choosing an IP Address

Be sure that the address for the WT-4 is different from the address used for the computer. The addresses for computer and WT-4 must however belong to the same class. In this example, we will use 192.168.1.3 for the computer and 192.168.1.4 for the WT-4.

4 - 10

Confirm that settings are correct and click **Next**.

WT-4 Setup Utility

Nikon

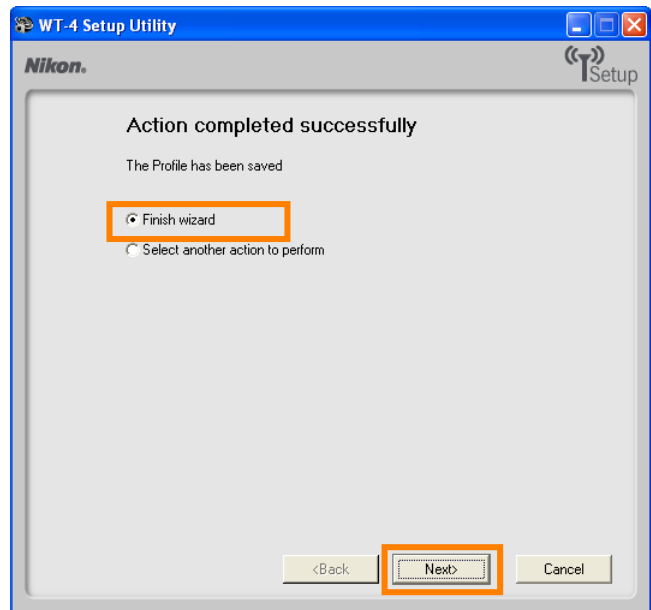
Profile information

Field	Value
Profile name	PC1
Profile type	Computer
Interface type	Wireless & Ethernet
Wireless settings	
Network name (SSID)	WT-4
Communication mode	Ad-hoc
Channel	1
Authentication	Open

<Back Next> Cancel

4 - 11

Select **Finish wizard** and click **Next**.



4 - 12

Turn the camera off and disconnect the USB cable. The network profile has now been copied to the camera.

5: Connect to the Computer

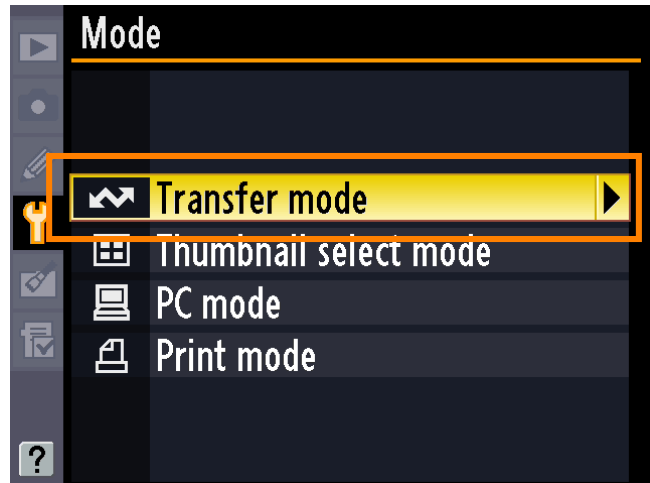
In this step, you will establish a wireless connection between the WT-4 and the computer. Before connecting the WT-4, select **MTP/PTP** for the **USB** option in the camera setup menu and confirm that the host computer is running and the user is logged in.

5-1

Insert a memory card in the camera, connect the WT-4, and turn the camera on.

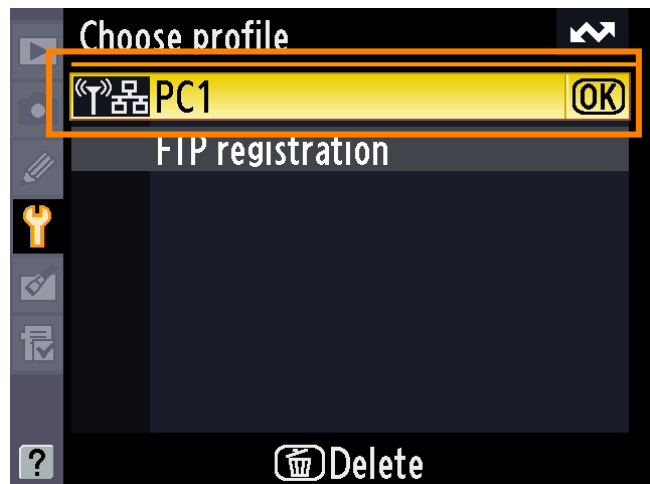
5-2

Choose an option for the **Wireless transmitter > Mode** option in the camera setup menu.



5-3

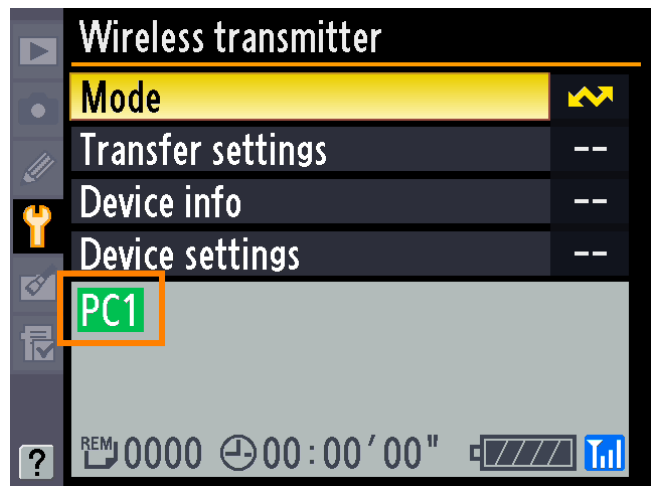
A list of available connection profiles will be displayed. Highlight the desired profile and press **OK**.



5 - 4

Return to the wireless transmitter menu and turn the WT-4 on. The profile name will be highlighted in green when a connection is established.

This completes the process of connecting to the computer.



 **Third-Party Security Software**

Third-party security software with firewall support may block the ftp server port, preventing access to the computer. This can be avoided by setting the software to allow protocols send and receive access to TCP ports 15740 and UDP ports 5353. For more information, see the documentation for the software or firewall.